

Living History Books

You can learn a lot about a tree by reading its special calendar of rings. Every year a tree grows a new layer of wood. This makes the tree trunk get fatter and fatter. The new layer makes a ring.

You can see the rings on a freshly cut tree stump. When the growing season is wet, the tree grows a lot and the rings are wide. When the season is dry, the tree grows very little. Then, the rings are narrow.

Directions: This tree was planted in 1976. Use the picture clues to color the rings of the tree stump. Where will the very first ring be?

1976

The tree was planted.
Color the ring **green**.



1991

The tree was cut down. Color the ring **yellow**.



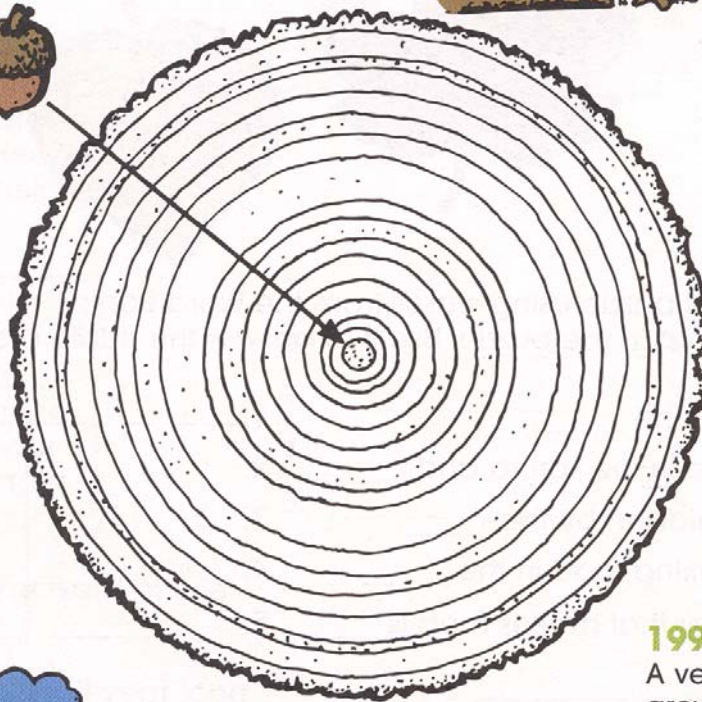
1985

A very wet
growing season.
Color the ring **blue**.



1990

A very dry
growing season.
Color the ring **brown**.



Challenge

Many of the giant sequoia trees in California are more than 2,000 years old. How many rings would a 2,000-year-old tree have?