

The Northlake Nature Center is located off of Highway 190 east of Mandeville on Bayou Castine. The Nature Center is open 365 days a year from Dawn to Dusk.

### Nature Trails

**By the Beaver Pond:** An open air pavillion overlooks the Beaver Pond when you first enter the NNC. There are several small trails that wind on the south side of the pond including the Old Clubhouse Loop which brings you around the historic clubhouse. This is a short and easy loop and is wonderful for viewing water birds, turtles, and other pond life.

**Eagle Trail:** A .75 mile loop winding through Longleaf Pine restoration areas.

**South Loop:** 1.2 miles long with scenic overlooks along the loop. The loop follows Bayou Castine and is an easy-moderate hike.

**North Loop:** This 1.75 loop is a beautiful trail that takes you through Longleaf Pine restoration areas, pine forest, and the scenic overlooks of Bayou Castine. The Savanna Lake Trail is accessible from North Loop and brings you to some of the most scenic areas at the NNC. This loop is a moderate hike due to the distance.

Northlake Nature Center  
P.O.Box 8511  
Mandeville, LA 70470



# Northlake Nature Center



## Children's Programs

## Site Information

The 400-acre NNC site has over 6 miles of nature trails and an education pavilion for programs. The site includes pine forest, swamps, ponds, and numerous plants and animals. Join us for one of our exciting and educational programs with a NNC trained naturalist.



### Program Fees

On-site Programs: \$2.50/person

\$ 50 minimum

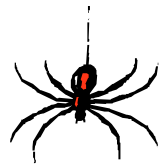
On-Site Unassisted: \$ 1/person

\$ 35 minimum

Off-site Programs: \$ 3/child

\$ 100 minimum

(Fees are subject to change)



## Children's Programs

**Amphibians and Reptiles-** Learn about our common frogs, toads, lizards, snakes, and turtles and play a scavenger hike game to find them!

**Animals and their Tracks-** This program describes our local native wildlife and their habitats. Make animal tracks in sand. Or create an animal track screen-printed bandana for additional fee of \$5/per child!

**Beavers-** We introduce you to our special beavers and their habitat. Dress up someone as an adaptation of a beaver!

**Birds-** Identify our local birds as we introduce bird facts and bird extremes into the picture! Play a bird match game! Or make a birdfeeder for additional fee of \$5/per child!

**Bugs and Insects-** Program discussing common bugs and their role in the ecosystem. Play a scavenger hike game to find them! Or create stain-glass butterflies for additional fee of \$3/per child!

**Fish Facts-** Learn about Louisiana's gulf coast marine life- characteristics, types of fishes, fish odor, shark attractions and how fish swim. Do a crustacean puzzle. Or make fish imprints on paper for additional fee of \$1/per child!

**Fossils-** What are fossils and how are they formed? Make a fossil with recycled items for additional fee of \$2/per child!

**Preservation and Conservation-** Learn the importance of preserving the NNC site for our native plants and wildlife. Participate in one of the many on-going preservation/conservation projects.

**Recycling-** What can be recycled? Make recycle art from your plastic water bottle. Or create a hiker's personal first aid kit with your plastic film canister for an additional fee of \$1/per child!

**Trees-** Identify trees by their leaves, bark and fruits and buds. Play leaf bingo or take a scavenger hike to identify our local trees. Or make a tree slice necklace for an additional fee of \$2/per child!

**Wildflowers-** Learn about Louisiana wildflowers and plant seeds in cups to take home or leave at the NNC.

The NNC offers a variety of programs and may not be listed above. All programs can include an art program and nature hike. Programs are developed for each specific group and are available for children between the ages of 6-18. For more information or to register for a program, please contact the Northlake Nature Center at (985) 626-1238 or visit our website at [www.northlakenature.org](http://www.northlakenature.org).